

# Tulip Block

## Cutting

### Background

A: 4 - 2 1/2" X 1 1/2"

B: 8 - 1 1/2" X 1 1/2"

C: 4 - 2 1/4" X 2 3/4"

D: 4 - 2" X 2"

I: 1 - 1" X 9 1/2"

J: 2 - 1 1/4" X 9 1/2"

L: 1 - 1" X 10 1/2"

### Leaves

G: 4 - 2 1/4" X 3 1/2"

### Stem

H: 2 - 1" X 5 3/4"

### Blossom

E: 2 - 4 1/2" X 3 1/4"

F: 8 - 1 1/2" X 1 1/2"

### Ground

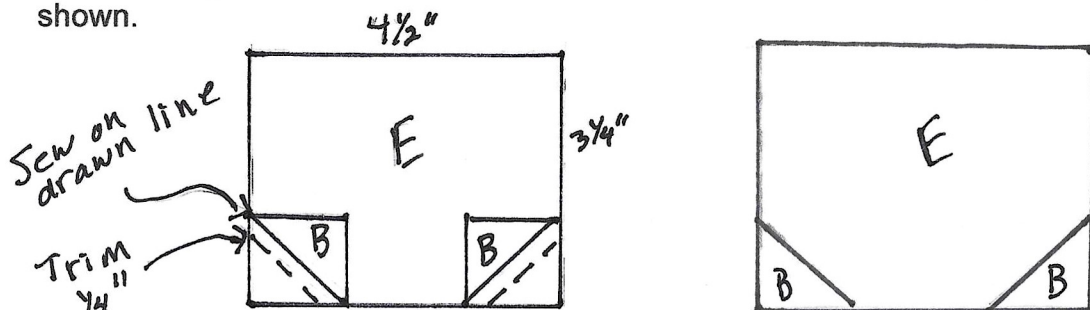
K: 1 - 1" X 10 1/2"

## Piecing

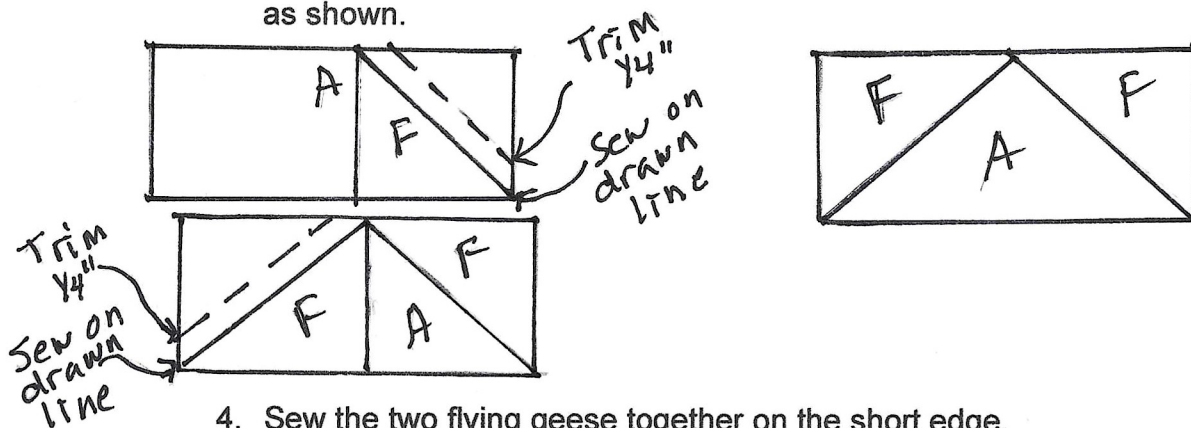
1. Draw a line diagonally on wrong side of fabric on Background Pieces B and D and on Blossom Pieces F.

To make one tulip:

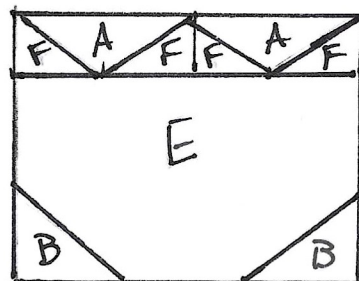
2. Sew a Background Piece B onto the 2 lower corners of a Blossom Piece E as shown.



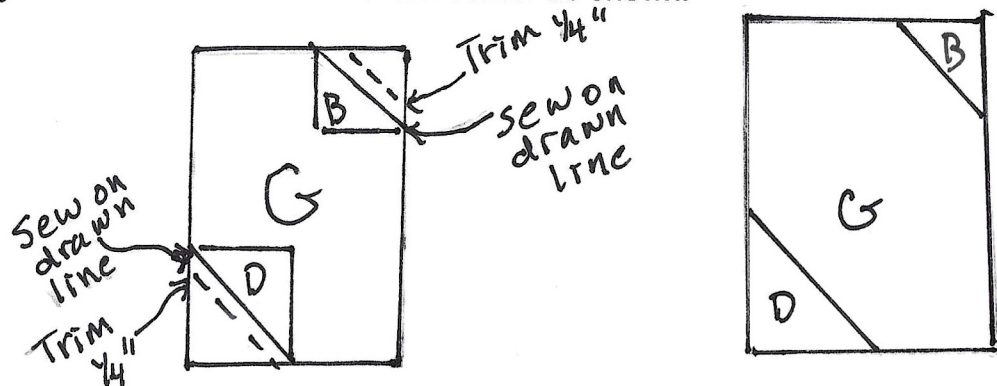
3. Make two flying geese blocks with Background Pieces A and Blossom Pieces F as shown.



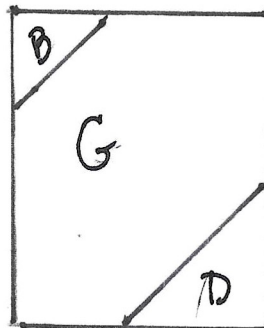
4. Sew the two flying geese together on the short edge.
5. Sew the joined flying geese to the top of the Blossom Piece E to create the Blossom Unit.



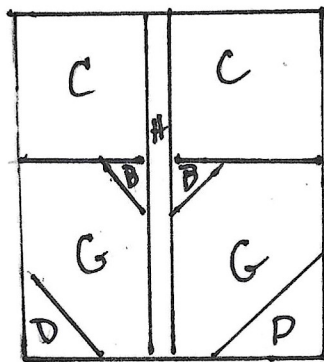
6. Sew a Background Piece B to the upper right corner of one Leaf Piece G and one Background Piece D to the lower left corner as shown.



7. Sew a Background Pieces B to the upper left corner of one Leaf Piece G and one Background Piece D to the lower right corner to create a mirror image leaf as shown.



8. Sew a Background Piece C to the top of each leaf to create 2 Leaf Units.  
9. Sew the 2 Leaf Units to either side of a Stem Piece H to create the Leaf/Stem Unit as shown.



10. Sew the Leaf/Stem Unit to the bottom of the Blossom Unit created in step 5.  
11. Make a second tulip following directions in steps 2-10.  
12. Sew the two tulips to each side of Background piece I.  
13. Sew Background pieces J to each side of the joined tulips.  
14. Sew Ground Piece K to the bottom of the joined tulips.  
15. Sew Background Piece L to the top of the joined tulips.

# Tulip Block Diagram

